

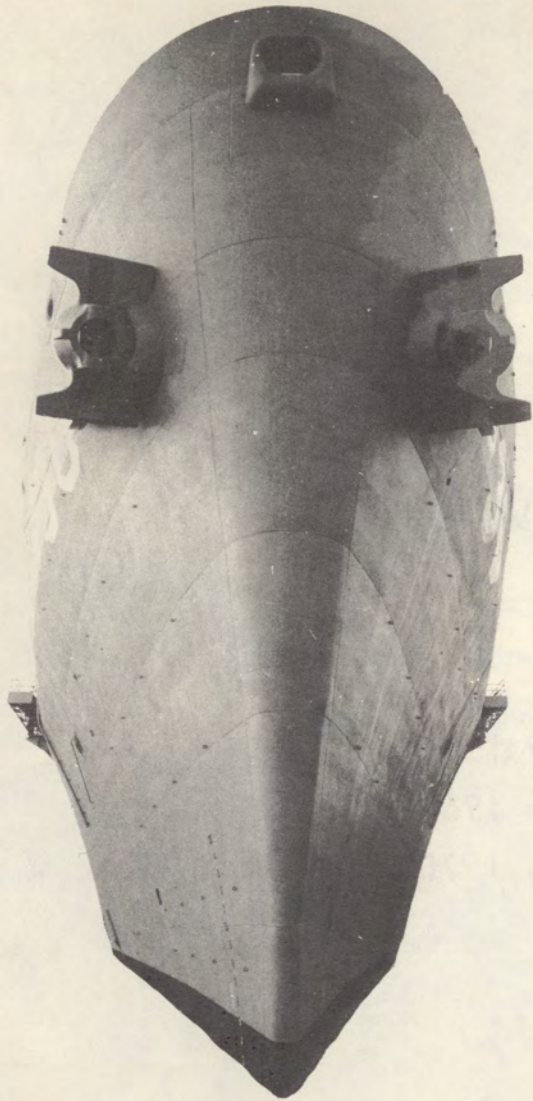
COMMISSIONING CEREMONY

28 FEBRUARY 1970

U.S.S. L.Y. SPEAR
(AS-36)



NORFOLK NAVAL SHIPYARD, PORTSMOUTH, VIRGINIA



THE COMMISSIONING OF A NAVY SHIP



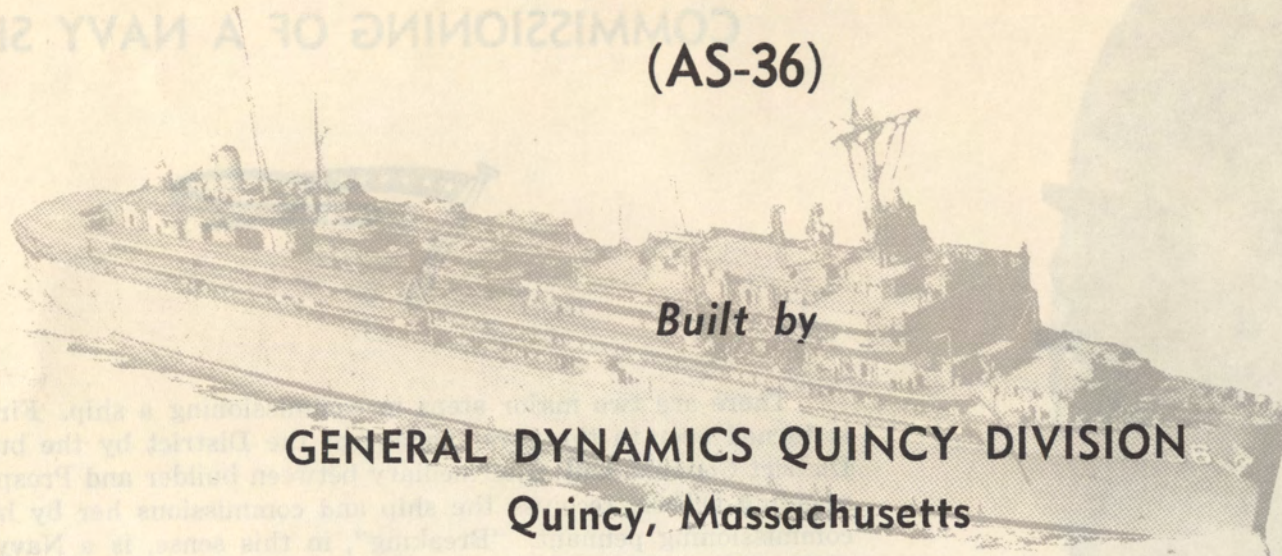
There are two major steps in commissioning a ship. First, the ship is turned over to the Commandant of the District by the builders. The District Commandant, intermediary between builder and Prospective Commanding Officer, receives the ship and commissions her by breaking the commissioning pennant. "Breaking", in this sense, is a Navy term used at the instant a pennant or flag flies free. At the instant of breaking her commissioning pennant on board U. S. S. L. Y. SPEAR (AS-36) the Prospective Commanding Officer assumes command and becomes the Commanding Officer and as such is the host for the remainder of the ceremonies.

The commission pennant has for centuries been the symbol of a man-of-war. It is said that when the Dutch Admiral Van Tromp defeated an English fleet in 1652, he cruised with a broom at his masthead, to signify that he had swept his enemies off the sea. When the positions were reversed in the following year, the British Admiral hoisted a long whip to indicate he had whipped his adversary. The whip later became standard in the form of a long pennant for all men-of-war ships throughout the world. Sailing ships carried pennants of extremely great length, but as more modern ships increased the number of guns, and other equipment topside, the length of the pennant was shortened and now the U. S. Navy uses two lengths; 4 or 6 feet. At one time 13 stars were used, symbolic of the original 13 states. In 1933 the seven-star pennant became standard.

UNITED STATES SHIP

L. Y. SPEAR

(AS-36)



Built by

**GENERAL DYNAMICS QUINCY DIVISION
Quincy, Massachusetts**

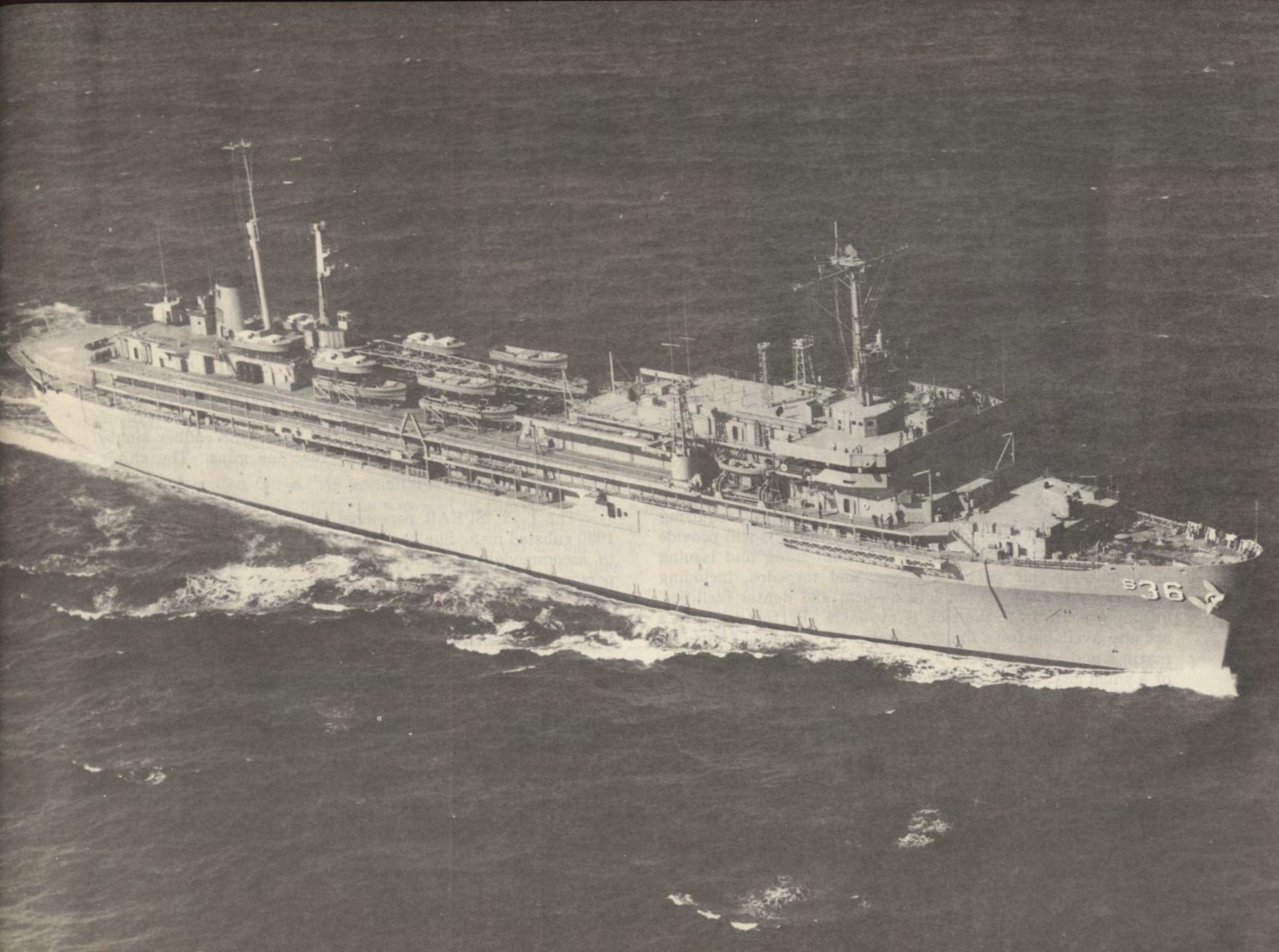
Keel Laid 5 May 1966

Launched 7 September 1967

Commissioned 28 February 1970

Sponsor

MRS. ARNOLD F. SCHADE



U.S.S. L.Y. SPEAR

(AS-36)

THE first of a class submarine tender, U.S.S. L. Y. SPEAR (AS-36) is designed primarily to provide mobile facilities, support and service for Attack Nuclear Submarines and their operational and administrative staffs.

L. Y. SPEAR is equipped with shops, material and technical capabilities to repair and modify submarines requiring any services short of shipyard facilities. She also will provide logistic support, including stocking, maintaining and issuing of supplies, repair parts, weapons, and torpedos, including exercise components. Complete medical and dental facilities, including a ward for the sick is available. Berthing facilities are also available for a limited number of personnel from submarines undergoing repair. L. Y. SPEAR has the completeness of a small city, and is capable of providing logistic support to an entire squadron of Nuclear Submarines, including a squadron and flotilla staff, with a significant portion of that squadron simultaneously receiving alongside services, including electrical power. The L. Y. SPEAR has the additional capability of helicopter operations. Her flight deck is large enough to permit day and night operations including helicopter starting and emergency refuelings.

L. Y. SPEAR is 640 feet long, with an 85 foot beam, a navigational draft of 24.5 feet and a full load displacement of 22,600 tons. She is armed with two 5 inch/38 caliber single gun mounts and four 50 caliber machine guns. The ship's designed speed is 18 knots.

The L. Y. SPEAR personnel allowance is 40 officers and 1030 enlisted men. She has the berthing and messing facilities to accommodate a total of 95 officers and 1252 enlisted personnel.

In summary, the L. Y. SPEAR is a floating industrial, supply, and services complex, a computerized supply center, an ammunition depot, a large modern self-contained support depot providing laundry, dry cleaning, barber shop and many other numerous services; her main strength is that as a U. S. Naval ship, she is capable of performing all these duties and more anywhere on the seven seas.

Upon completion of fitting out at Norfolk Naval Shipyard and shakedown training, L. Y. SPEAR will join the Submarine Force, U. S. Atlantic Fleet at Norfolk, Virginia.

BIOGRAPHY OF LAWRENCE YORK SPEAR

Lawrence York Spear was born in Warren, Ohio in October 1870. The Spear family comes from a long line of brilliant and distinguished persons with a recorded beginning in about 1644 when a George Speer (one of the variations in spelling) settled near Braintree, Massachusetts.

Mr. Spear had a very early interest in ship construction and with this objective in mind he entered the United States Naval Academy at Annapolis in 1886 and graduated second in his class of 1890.

Subsequent to his graduation from the Naval Academy, he served in the cruisers PENSACOLA, BALTIMORE and CHARLESTON, operating in the Atlantic and South Pacific Oceans. Mr. Spear's interest and enthusiasm for modernizing the United States Fleet led him to apply and be selected for the Construction Corps. As no suitable course of instruction was available in this country, he was sent to Glasgow University, Glasgow, Scotland, for special training in Marine Engineering and Naval Architecture. He then served at various shipbuilding yards throughout the United States and then was assigned as Superintendent of Construction and Repair at Crescent Shipyard in Elizabethtown, New Jersey. While at Crescent Shipyard he superintended, for the Navy, the construction of the first submarines built for the Navy. These were five Holland submarines of the A or ADDER class which were under contract from the Electric Boat Company. Mr. Spear recognized the potential of these new ships and with them saw the opportunity to fully utilize his abilities in the development of the submarine. In 1902 he resigned his commission as a Lieutenant and for the next 48 years he was with Electric Boat Company. Starting as a technical director in 1902 he was elected director to replace Phillip Holland on 3 May 1904 and on 24 June 1904 he was elected Vice President of the Electric Boat Company, a position he held until 1942



when he was elected President of the company. In 1947 he relinquished the Presidency to become Chairman of the Board. He died in 1950.

Citing Mr. Spear in 1949, Rear Admiral James Fife, then Commander of the Submarine Force, U. S. Atlantic Fleet said, "Of all of those who have contributed to the modern submarine, if the greater portion could be attributed to one man, it would be to Lawrence Spear."

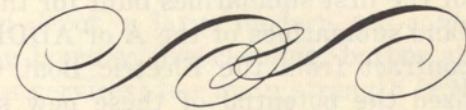
Former President Harry S. Truman commended L. Y. Spear for, "Outstanding fidelity and meritorious conduct in aid of the war effort against the common enemies of the United States and its allies in World War II."

THE SPONSOR



Mrs. Arnold F. Schade

Rebecca Fiske Schade is the wife of Vice Admiral Arnold F. Schade. A native Californian, Mrs. Schade has had a long association with the Navy, being the daughter of Captain and Mrs. Charles N. Fiske and the granddaughter of Rear Admiral James A. Hawkes, both former Navy physicians. As a young Navy wife, Mrs. Schade knew Lawrence Y. Spear socially in New London, Connecticut. She is the mother of four daughters and has ten grandchildren.



GUEST SPEAKER

THE HONORABLE THOMAS EDISON TROLAND

Judge Superior Court, Connecticut

The Honorable Thomas Edison Troland was born in New London, Connecticut on 22 January 1893. He graduated from Buckley High School, New London, Connecticut and presently serves as a trustee for that school. In 1914 Judge Troland was admitted to the bar of the State of Connecticut and entered general law practice. At the outset of World War I he graduated from Officers' Training Camp, Plattsburg, New York and served in the Army until 1919. In 1920 he joined the Connecticut National Guard and in 1940 was appointed, by the Governor of Connecticut, a Brigadier General. In 1941 General Troland was inducted into Federal Service and served at various stations until September of 1945 when he was released from active duty to serve as Chief Judge of the Superior Court of Connecticut. In 1953 Judge Troland retired from the U. S. Army Reserve as a Brigadier General and in 1963 he retired as Chief Judge of the Superior Court of Connecticut, although he still retains a position as Judge of the Superior Court of Connecticut, hearing court cases daily. He also served as a civilian aide to the Secretary of the Army from 1955 to 1963.

Judge Troland and Mr. L. Y. Spear were steadfast friends through the years and Judge Troland is now a member of the Board of Trustees of the L. Y. SPEAR FOUNDATION and assists in the presentation of the L. Y. SPEAR Award to the honor graduate of Submarine School New London, Connecticut.

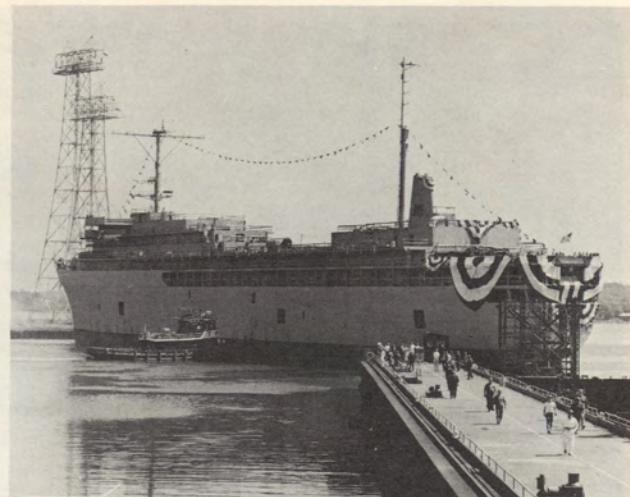
Judge Troland is married to the former Roberta Morgan and they presently reside at 20 Niles Hill Road, New London, Connecticut.



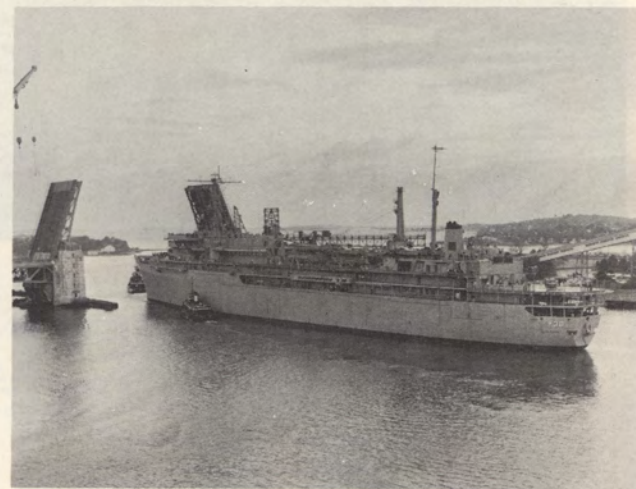
CHRISTENING



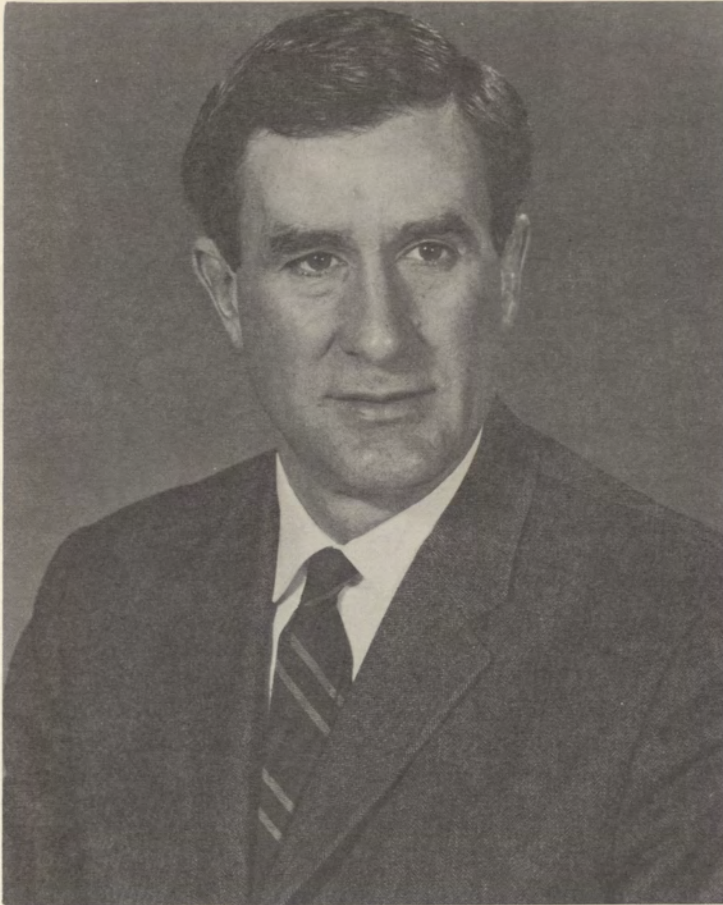
LAUNCHING CEREMONY



WATERBORNE



UNDERWAY



*To the officers and men of the
U.S.S. L.Y. Spear (AS-36)
with very best wishes
John H. Chafee
Secretary of the Navy
February 28, 1970*

HONORABLE JOHN H. CHAFEE
Secretary of the Navy



THE SECRETARY OF THE NAVY
WASHINGTON

17 January 1970

Captain Ralph M. Ghormley, USN
PCO, L.Y. SPEAR (AS-36)
General Dynamics Corporation
Quincy Division
Quincy, Massachusetts 02169

Dear Captain Ghormley,

Congratulations on your new command, and best wishes to you, your officers and crew on the commissioning of L.Y. SPEAR (AS-36).

It is your privilege to command a ship embodying the latest advances in equipment and techniques for supporting our fleet's nuclear attack submarines. For America, sea power is peace power. As President John Adams long ago reminded us, it is "the natural and efficient defense of this country against all foreign hostility." A strong, battle-ready Navy is not only a formidable defense for the United States, but also a powerful protector of the world's sea lanes for peaceful use by seamen of every nation. It is L.Y. SPEAR's vital responsibility to help keep our undersea fleet fully prepared for any eventuality.

I know that you and every man of L.Y. SPEAR's company will meet the challenges that lie ahead in the true "can do" spirit of the submarine forces. While a navy's strength lies in its ships, it is this human element of competence and devotion that is needed to bring them to life. May you meet with every success in this crucial task.

Sincerely yours,

John H. Chafee
John H. Chafee

LAUNCHING CEREMONY - CHRISTENING



CHIEF OF NAVAL OPERATIONS

27 February 1970

Dear Captain Ghormley,

My sincere best wishes go to you and to your crew on the commissioning of L. Y. SPEAR (AS-36). May the voyage ahead be most rewarding.

As the first commanding officer, you have a unique task. You will set the pattern of competence and leadership that will, in turn, shape the spirit and reputation of your ship throughout her years with the fleet.

In this exacting mission you could ask no better exemplar than the man whose name your ship honors. In his early years, Lawrence York Spear participated in the building of some of the first steel ships of the "new Navy" of the twentieth century. His great lifetime work was the development of the modern submarine. His perseverance and foresight were instrumental in creating our submarine fleet and in building up the expertise and production capacity which would contribute so tellingly to our victory in World War II. As Rear Admiral James Fife remarked, "there are thousands of people who have contributed to the modern submarine, but I think that all who are informed will concede that if the greater portion of this can be attributed to any one single individual, he is Lawrence Spear."

Submariners have traditionally been known for the combination of efficiency and humanity so well lived by L. Y. Spear. I know that his name and work will serve you well as a standard of excellence, now and in the years to come.

On behalf of the Navy, I welcome L. Y. SPEAR to the fleet. May the best of good fortune be yours.

Sincerely,
Tom Moor

T. H. MOORER
Admiral, U. S. Navy

Captain Ralph M. Ghormley, USN
PCO, L. Y. SPEAR (AS-36)
General Dynamics Corporation
Quincy Division
Quincy, Massachusetts 02169



*To: The Officers and Men of L. Y. Spear -
On behalf of All Hands, Welcome to
the Fleet of the mightiest Navy
in the world.
T. H. Moorer
Chief of Naval Operations*

ADMIRAL THOMAS H. MOORER, USN
Chief of Naval Operations



ADMIRAL EPHRAIM PAUL HOLMES, USN
Commander in Chief Atlantic
and U. S. Atlantic Fleet

COMMANDER IN CHIEF, ATLANTIC
 AND U. S. ATLANTIC FLEET



NORFOLK, VIRGINIA 23511

5 JAN 1970

Dear Captain Ghormley:

Upon the commissioning of USS L. Y. SPEAR (AS 36), I extend to you, your officers and crew, my congratulations and I wish you well in your future role in the Atlantic Fleet.

You and the members of your crew are fortunate to be a part of the birth of the "new" U.S. Navy. The addition of L. Y. SPEAR brings to the Fleet the potential for a more effective and more efficient undersea warfare capability. The realization of her potential will not come easily. It can be achieved only through hard work and dedicated performance.

As L. Y. SPEAR's first commanding officer, you and your crew are in a unique position. You will set the tone of this ship and establish her reputation in the Fleet. By your leadership and skill your ship will be known.

The Atlantic Fleet anxiously awaits the opportunity to utilize USS L. Y. SPEAR in her operational role. To you, your officers and ship's company, best wishes for many rewarding cruises.

Sincerely,

E. P. HOLMES
 Admiral, U.S. Navy

Captain R. M. Ghormley, USN
 Prospective Commanding Officer
 USS L. Y. SPEAR (AS 36)



Commander Submarine Force
United States Atlantic Fleet
Norfolk, Virginia 23511

21 February 1970

Dear Captain Ghormley,

Today marks another great milestone for the Navy and the Submarine Force as USS L. Y. SPEAR (AS36) joins the fleet. She represents a great advance in the art of submarine repair. Her design includes the most modern facilities and equipment available. Her officers and men are among the finest, most capable, skilled, and dedicated in both fleets. Her capabilities will greatly enhance the material readiness of the Submarine Force.

As lead ship of a new class, the first specifically designed to support our nuclear powered attack submarines, the L. Y. SPEAR has the opportunity to set the standards for those to follow. The practices and procedures she develops, her attitudes and standards of performance, will influence material readiness in the Submarine Forces for years to come. These are heavy responsibilities. I am confident that L. Y. SPEAR will discharge them well.

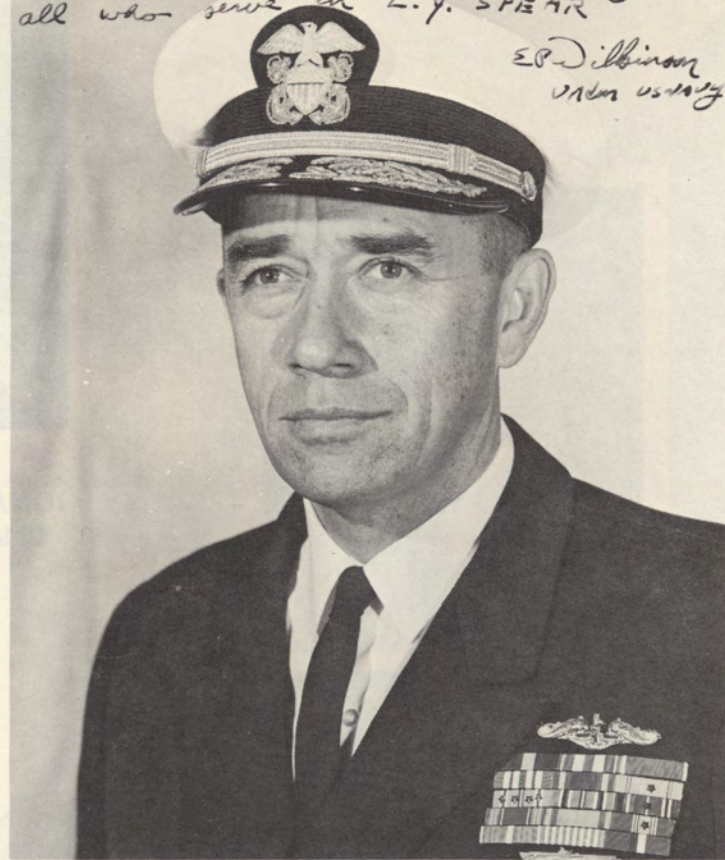
My congratulations to you and to each of your officers and men on this proud day.

Sincerely,

E. P. Wilkinson
E. P. WILKINSON
Vice Admiral, U. S. Navy

*Best of luck and smooth sailing to
all who serve in L. Y. SPEAR*

*E. P. Wilkinson
VADM USN*



VICE ADMIRAL E. P. WILKINSON, USN
Commander Submarine Force
U. S. Atlantic Fleet



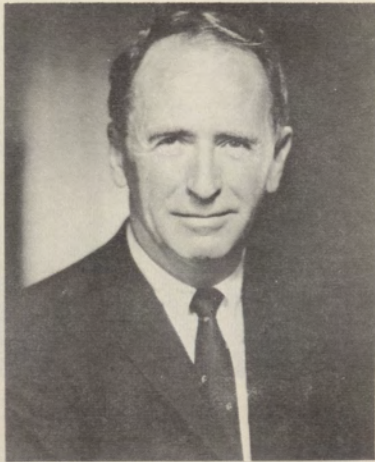
**ADMIRAL
IGNATIUS J. GALANTIN**
Chief of Naval Materiel



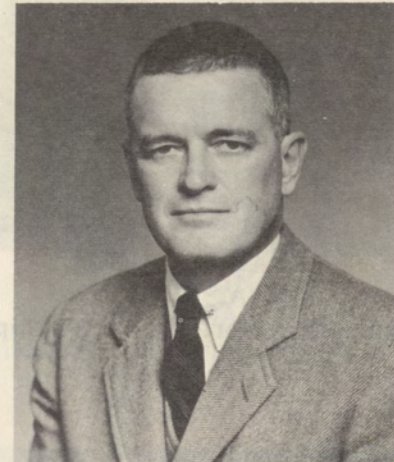
**REAR ADMIRAL
J. C. DEMPSEY**
Commandant, Fifth Naval District



**REAR ADMIRAL
J. C. WYLIE**
Commandant, First Naval District



MR. ROGER LEWIS
President General Dynamics



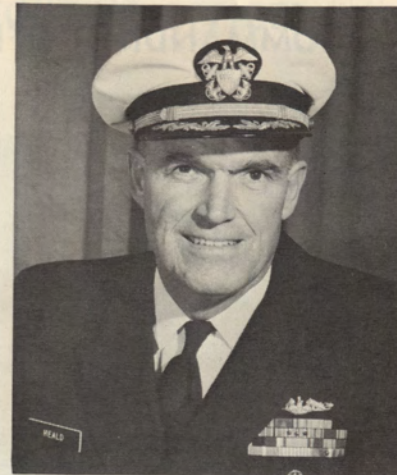
MR. LLOYD BERGESON
General Manager Quincy Division
General Dynamics



**REAR ADMIRAL
J. A. BROWN**
Commander, Norfolk Naval Shipyard



**REAR ADMIRAL
J. B. OSBORN**
Commander, Submarine Flotilla Six



**CAPTAIN
J. F. HEALD**
Commander, Submarine Squadron Six



**CAPTAIN
J. M. DUKE, JR.**
Supervisor of Shipbuilding, USN
Quincy, Massachusetts

COMMANDING OFFICER



CAPTAIN RALPH M. GHORMLEY, USN

Captain Ralph M. GHORMLEY, USN, was born in Boston, Massachusetts, reared in Rochester, Minnesota, and commissioned as an Ensign, U. S. Navy, upon graduation from the U. S. Naval Academy in June 1949. After service in USS ORLECK (DD-866), he attended Submarine School. From 1951 to 1955 he served in the submarines SEA FOX and HARDHEAD. In 1957 after completing post graduate education in command communications, he served on the Staff of Commander Submarine Squadron Five and in the submarines RATON and SEA FOX. After completing Nuclear Power Training in 1961, he reported to the BARB (SSN-596) as Executive Officer. In 1963 he assumed command of the nuclear attack submarine SCORPION (SSN-589) and while so serving, he was twice awarded the Navy Commendation Medal for outstanding performance of duty. In August 1965 he assumed command of the Polaris submarine SAM RAYBURN (SSBN-636), after which he commanded Submarine Division Fifty-Three for one year before his present assignment as PCO, L. Y. SPEAR.

Captain GHORMLEY is married to the former Sara McKnight of Cleveland, Ohio. They presently reside with their two children in Virginia Beach, Virginia.

EXECUTIVE OFFICER

Commander Douglas A. WILLIAMS, USN, commenced his commissioned service in June 1952 upon graduation from Yale University. Prior to his attendance at Yale, as a regular NROTC student, Commander WILLIAMS had served as a Seaman in the submarines USS ATULE (SS-403) and USS TORO (SS-422). Upon being commissioned Ensign, USN, he served in USS JACK W. WILKE (EDE-800). Following graduation from submarine school in 1954, Commander WILLIAMS' duties included tours in USS GROUPER (SSK-214), USS ENTEMEDOR (SS-340), USS SENNET (SS-408) as Executive Officer and USS WOODROW WILSON (SSBN-624) as Navigator and Operations Officer. During 1965 thru 1967 he was Commanding Officer, USS THORNBACK (SS-418). During this period THORNBACK was awarded the Battle Efficiency "E" and the Torpedo Fire Control Excellence Award for Submarine Division Forty-One.

Service ashore included a tour of duty as Commanding Officer, Naval Reserve Training Center, Salem, Massachusetts, with concurrent duties as Officer in Charge of the Naval Reserve Training Submarines USS SHAD (SS-235) and USS SEA DOG (SS-401). Immediately prior to the assumption of duties as Prospective Executive Officer of L. Y. SPEAR, Commander WILLIAMS served in Northwood, Middlesex, England, as the representative of Commander Submarine Forces, U. S. Atlantic Fleet to the Commander in Chief, Eastern Atlantic area and to Commander Submarines, Eastern Atlantic area.

Commander WILLIAMS, a native of Westfield, Massachusetts, is married to the former Miriam Irvine of Carmel, California. They and their daughter, Nancy, presently reside at 4528 Biscayne Drive, Virginia Beach, Virginia.



COMMANDER DOUGLAS A. WILLIAMS, USN

U.S.S. L. Y. SPEAR

Commissioning

28 February

MUSICAL SELECTIONS
COMNAVAIRLANT Band



INVOCATION

Captain G. M. Leonard, CHC, USN
Force Chaplain
Commander Submarine Force, Atlantic Fleet



WELCOMING REMARKS

Rear Admiral James A. Brown, USN
Commanding Officer, NNSY



INTRODUCTION OF DISTINGUISHED GUESTS



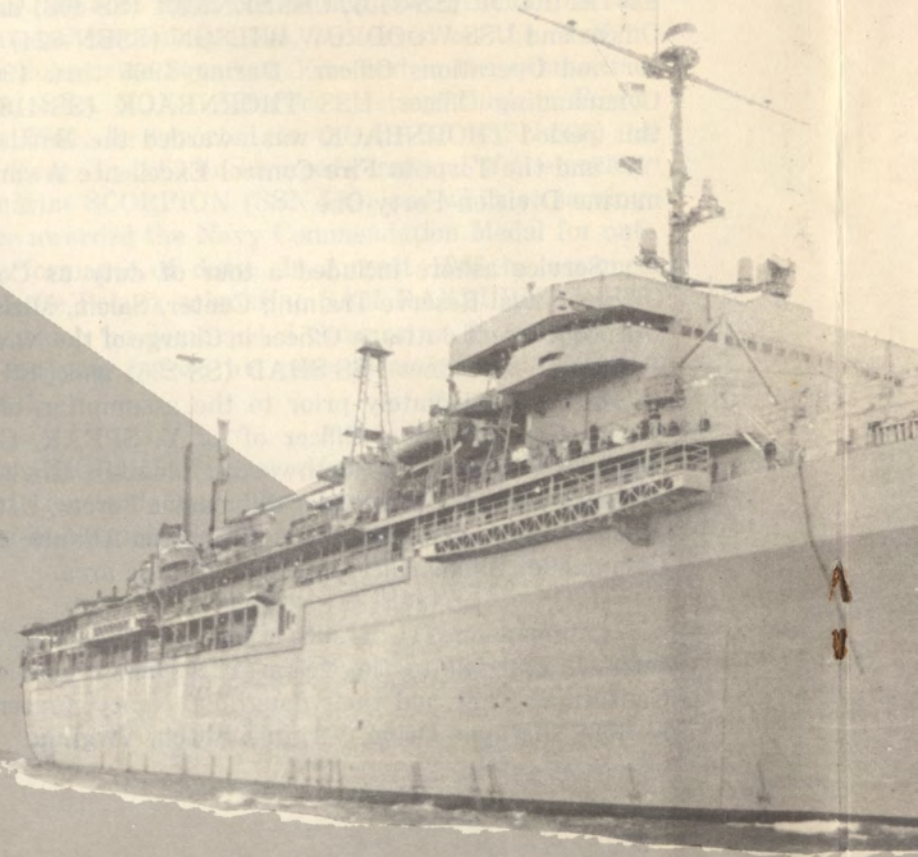
ADDRESS

Honorable Thomas E. Troland



READING OF COMMISSIONING ORDER

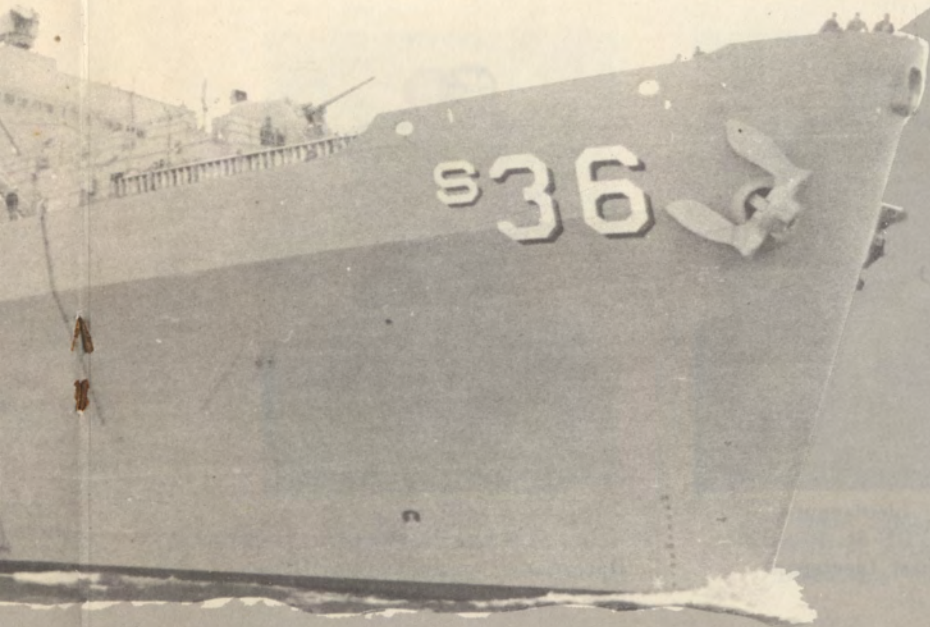
Rear Admiral James C. Dempsey, USN
Commandant Fifth Naval District



SPEAR (AS-36)

ing Ceremony

bruary 1970



COMMISSIONING

The playing of the National Anthem
The hoisting of the National Ensign, Union Jack
and the breaking of the Commissioning Pennant



COMMANDING OFFICER ASSUMES COMMAND

Captain Ralph M. Ghormley, USN



SETTING THE WATCH

Commander Douglas A. Williams, USN
Executive Officer, USS L. Y. SPEAR (AS-36)



RENDERING OF HONORS



REMARKS BY COMMANDING OFFICER

Captain Ralph M. Ghormley, USN



BENEDICTION

LCDR Joseph D. Cox, CHC, USN



MUSICAL SELECTIONS

DEPARTMENT HEADS



Captain
ALBERT R. SMITH
Dental Officer



Commander
PAUL T. McMAHAN
Supply Officer



Lieutenant Commander
WILLIAM FREAKES
Repair Officer



Lieutenant Commander
ANTHONY CIOTTI
Navigator



Lieutenant
HERBERT E. McBRIDE
Weapons Officer



Lieutenant
JOE B. GOODSON, JR.
Engineering Officer



Lieutenant
CLYDE M. PERRY
First Lieutenant



CWO-2
CHARLES WALL
Operations/Communications Officer

SHIPS OFFICERS



Lieutenant Commander
JOSEPH D. COX
Chaplain



Lieutenant
FRANK W. SNYDER
Nuclear Systems Repair Div. Ofcr.



Lieutenant
DANIEL B. McNUTT
Inventory Control Officer



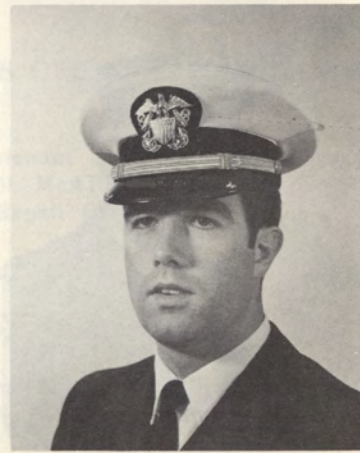
Lieutenant
SAMUEL W. HELM
Machinery Repair Division Officer



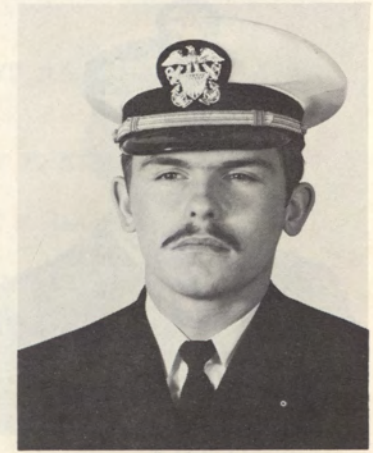
Lieutenant
JOHN R. KELLEY
Stores Officer



Lieutenant Junior Grade
JOHN C. ALBERT
Disbursing Officer



Lieutenant Junior Grade
S. W. SUTHERLAND
Data Processing Officer



Lieutenant Junior Grade
THOMAS C. LITTLE
Retail Operations Officer

SHIPS OFFICERS



Ensign
STEPHEN L. PETROSS
Gunners Officer/Ship's Boatswain



Ensign
JAMES FRANTZ
Nuclear Weapons Officer



Ensign
GREGORY A. McDANIEL
Radiation Health Officer



CWO-2
CHARLES E. BIRD
Legal Officer



CWO-2
WILBURN E. VAN DYKE
Electrical Officer



CWO-2
BAUCOM HINSON
Administrative Officer



CWO-2
ROBERT B. BROOKS
Hull Repair



Chief Machinist W-2
DONALD F. MARKLE
Damage Control Assistant

SHIPS OFFICERS



WO-1
RALPH J. HARKER
Torpedo Repair Officer



WO-1
ELMER L. GRAFFORD
Supply Assistant Team Officer



WO-1
HOWARD N. KING
Food Services Officer



WO-1
FREDERICK L. BRIGGS
Main Propulsion Assistant



Lieutenant Commander
AL SWARTZ
Assistant Supply Officer

OTHER SHIP'S OFFICERS — PICTURES NOT AVAILABLE

Lieutenant
HARRY M. McAFEE
Assistant Repair Officer

Lieutenant
GEORGE W. CLARK
Medical Officer

Ensign
KEVIN C. DOLAN
Assistant Stores Officer

CWO-2 BILLY E. KIDD

CWO-2 CLAUDE R. HANLEY

CWO-2 PAUL MILES

MASTER CHIEF PETTY OFFICERS



GMCM P. C. PRITT



DCCM E. H. HILL



ENCM (SS) R. E. SIMONINI



SDCM T. H. ATKINS



EMCM L. E. OLSON

SENIOR CHIEF PETTY OFFICERS



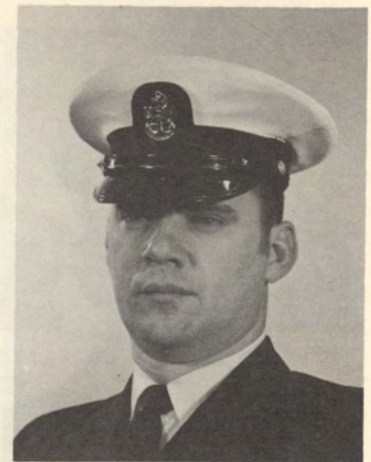
STCS P. W. STINCHFIELD, JR.



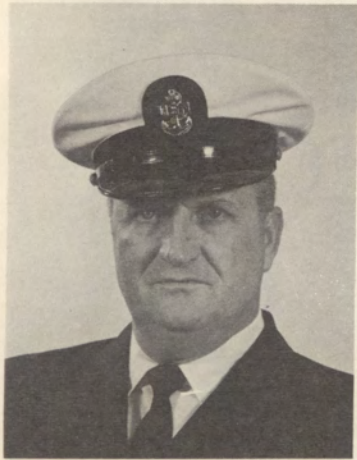
TMCS C. L. DuBOIS



DCCS W. A. GRANT



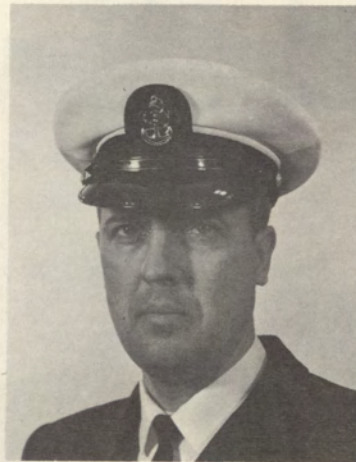
ICCS M. MANNING



HMCS H. C. REAVES



TMCS J. R. SHEA



FTGCS D. L. KELLEY



OMCS S. PEARL

SENIOR CHIEF PETTY OFFICERS



SKCS D. H. SARRATT



RMCS E. W. DENSTEN



BMCS F. C. PETERS



YNCS R. T. CUPP



LICS R. A. GREENWOOD



IMCS L. E. CORRIVEAU



ETCS L. T. GALBRAITH



CSCS T. J. WALSDORF

CHIEF PETTY OFFICERS



SFC
H. D. BAILEY



EMC
W. G. HAUN



PNC
R. D. LA LONE



SFC
L. F. TISDALE



EMC (SS)
B. HIMES



SFC
R. V. THORTON



MMC
E. J. SMITH



SFC
D. R. RAMSEY



SKC
L. M. ANDERSON



RMC
R. R. JOHNSON



ICC
R. R. SIZEMORE



FTGC
R. L. MORGAN



SFC
J. M. GREEN



SFC
P. B. PIKE



MMC
C. MONTGOMERY



SHC
M. M. OSWALD



ENC
J. R. BARBER



EMC
H. W. WILLOUGHBY

CHIEF PETTY OFFICERS

SENIOR CHIEF PETTY OFFICERS



BMC
R. L. WEESE



PMC
G. J. RHODES



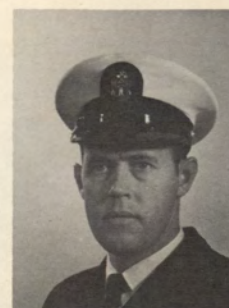
HMC
H. R. LA FONTAINE



SKC
H. L. WESTERHOFF



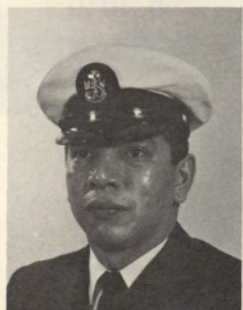
DTC
R. E. CLOWES



SFC
W. E. SHIELDS



TMC
D. C. DEUYOUR



MRC
A. S. HARRIS



MMC (SS)
W. L. PACKMAN



EMC
R. D. HERNANDEZ



BTC
J. R. WEAVER



MMC
R. L. FIRST



TMC
W. S. HARRISON



BMC
O. T. NOWLIN



SFC
H. G. SIMPSON



SFC
R. D. HODGE



MLC
R. C. LUTZ



SFC
E. R. GAY

CHIEF PETTY OFFICERS



SFC
R. C. MULALLY



SFC
H. R. CLARK



SFC
W. L. WINKLER



SKC
R. M. LEACH



ENC
D. E. KINISELY

Pictures Not
Available

SFC D. J. St. Pierre
SFC W. B. Smith
DKC J. C. Gomez
SKC R. E. Harris

FIRST CLASS PETTY OFFICERS

ANGEL, G. D., ET1
ANSON, D. L., TM1
BAIRD, L. M., MM1
BAIRD, R. A., ET1
BARRETT, H. W., DM1
BARRS, J. H., TM1
BARTON, G. L., SD1
BATCHELOR, D. L., EN1
BATTE, D. R., TM1
BAXTER, R. L., MR1
BISHOP, V. A., MR1
BREWER, R. D., MM1
BRITTON, J. M., EM1
BRYAN, L. W., FTG1
BUCK, M. D., MM1
BUCK, R. F., SF1
BUSHIE, R. R., SM1
CAMPBELL, J. M., EM1
CANAWAY, R. W., RM1
CARL, E. R., BT1
CARRIER, R. C., BT1

CARROLL, J. W., DC1
CHAMBLISS, J. W., FTG1
CHARLES, D. L., MM1
CLAY, G. B., DC1
COLE, G. N., TM1
COLE, R. L., SH1
COLES, P. E., SK1
COOLEY, C. E., EM1
COTRELL, R. W., SK1
COX, W., MM1
CRAWFORD, G. D., MM1
DAVIDSON, B. R., RD1
DEAN, D., EN1
DECHANE, T., TM1
DEGOLLADO, N., DP1
DEHART, B. D., GMG1
DELEGADO, F., SH1
DEMARCO, M. A., MR1
DEMPSKI, H. H., MR1
DIEDRICH, A. W., EM1
DILLON, C. G., BR1

DITZLER, B. L., SF1
DORHOUT, K. D., SF1
DOUBLE, W. C., TM1
DUDLEY, H. O., EM1
ELKINS, W. E., DT1
EVANS, N. L., MR1
FERRELL, L. M., HM1
FISHER, G. F., DS1
FLETCHER, R. E., YN1
FORD, R. S., LI1
FRANKLIN, J. G., HM1
FRANKLIN, R. D., OM1
FULKERSON, D. F., SF1
GLASER, D. C., MM1
GLESSNER, G. M., SK1
GOODE, R. G., PC1
GOODISON, W. D., DK1
GREENWOOD, C. T., EN1
HABERMAN, R. R., RM1
HALL, D. W., PM1
HARKNESS, D. J., EM1

HARRIMAN, G. E., IC1
HARRIS, L., SK1
HAWKINS, C. E., CS1
HEFFNER, P. T., HM1
HEGE, B. W., SF1
HENNEN, T. W., SF1
HILL, A. D., SF1
HILLS, A., SH1
HITESMAN, J. S., SF1
HUCKABY, R. E., CS1
HUDSON, D. G., BT1
HUFF, B. G., BT1
JACKSON, W. P., DK1
JENKINS, S. J., BM1
JOHNSON, A. A., SF1
JOHNSON, C. W., SH1
KAFADER, L. G., SH1
KELLEY, W. F., YN1
KEMP, A., DC1
KENNEY, D. F., SK1
KINARD, N. E., CS1

KORBA, O. D., SK1
LAPLANTE, F. C., EN1
LEONARD, D. T., MM1
LEWIS, C., MR1
LEWIS, J. D., EN1
LOCKWOOD, J. L., MM1
LONG, T. G., SF1
LONG, W. R., EM1
LUND, D. A., BM1
MATIKONIS, W. P., DC1
MAYNARD, O., MM1
McDOUGAL, W. G., SK1
McVEY, D. E., MM1
MEHLUM, R. B., MM1
MERCER, I. A., SF1
MILLER, W. F., SF1
MOORMAN, M. J., SK1
MORRIS, R. L., SF1
MORRIS, W., RM1
MURRAY, J. A., TM1

NIVISON, G. J., MM1
NORRIS, J. G., MM1
OWENS, T., BT1
PABLECIO, J., SD1
PASCHKET, R. C., GMT1
PATRICK, E. J., BM1
PATTERSON, J. T., IM1
PAUL, B. N., ML1
PHELPS, S. L., SH1
PLUM, D. G., EN1
POND, P. R., W-1
PYSKA, G., IM1
RAMIREZ, A. S., SK1
REINE, L. F., TM1
REUTER, W. H., MR1
ROBISHAW, A. W., EN1
RUSSUM, R. A., SF1
RUTH, H. H., SK1
SAMPSON, G. W., CS1

SANDUSKY, D. L., QM1
SEARCK, M. E., TM1
SELIGMAN, H. C., MR1
SHAFFER, B. J., MM1
SIMMS, J. P., BM1
SMITH, R. E., EN1
SNYDER, D. G., SF1
SOLANA, M. A., GMG1
STEWART, T. E., MM1
STITES, R., CS1
STOREY, B. E., RM1
STRAUCH, J. H., BM1
STRONG, M. W., SK1
SWEENEY, M. J., EM1
TAPLIN, R. H., BT1
TATE, C. M., SK1
TAYLOR, F. E., EM1
TERRELL, J. J., IC1
THOMAS, F. T., IC1

THOMAS, H. R., BM1
THOMAS, W. E., RM1
THOMPSON, R. E., SK1
TOLLAND, R. B., YN1
TROIANO, W. M., FTG1
TURNER, B. J., EM1
TURNEY, G. J., MM1
VAN PELT, C. M., SF1
WAGNER, R. O., SF1
WALDON, P. J., PN1
WALLACE, D. L., MR1
WELLER, L. W., ET1
WELLS, J. T., SK1
WESTMORLAN, K. W., BT1
WILLIAMS, J. H., SD1
WILLIAMS, R. L., BT1
WINEGARDENER, C. E., TM1
YOUNKER, L. H., EM1
ZACHMAN, L. A., IC1

SECOND CLASS PETTY OFFICERS

ABOE, M. B., DC2
ALVAREZ, J. H., SK2
ASHLEY, L. V., YN2
ASTALOS, A. M., SK2
BARLOW, F. E., MM2
BERRY, W. A., SH2
BIASELLA, R. A., ETR2
BLACK, R. C., SM2
BODIFORD, J. O., CS2
BOUTWELL, P. F., SFP2
BREIDENSTEIN, H. L., TM2
BROCK, C. F., ETN2
BROOKS, J. L., TM2
BURTON, R. G., TM2
CAMMAUF, R. I., EM2
CARTWRIGHT, W. A., GMG2
CHALMERS, R. E., DK2
CHIVERS, S. E., TM2

CHURCH, L. B., MM2
COMBS, R. B., BM2
COUGHLIN, R. R., EM2
CUTHBERT, R. P., STS2
DAHLSTEN, W. D., DP2
DAVIS, E. P., EM2
DAVIS, R. E., DC2
DECASTRO, A. D., SD2
DECKER, P. J., SFP2
DESJARDINS, R. J., SFM2
DEVILLING, C. H., ETN2
DINSMORE, J. A., IC2
DONATELLI, J. L., ETR2
DUKE, R. C., MR2
EGAN, M. E., EN2
EMERSON, T. A., EM2
ERRINGTON, M. L., STS2
ESCOBAR, D. D., BM2

FARR, J. L., CS2
FITZGERALD, A. R., BT2
FLOM, R. B., DS2
FOXX, G. J., EN2
FRENCH, F. W., FTG2
GALLAGHER, D. E., EM2
GARDE, L. R., SD2
GARY, C. H., TM2
GILBERT, R. H., YN2
GILLIAM, A. L., BT2
GIPE, R. S., STS2
GONZALES, T., TM2
GRAFF, J. C., EN2
GRIFFIN, D. M., TM2
HAGER, G. E., MM2
HANCOCK, J. R., PN2
HANIE, R. E., CS2
HAPKE, R. E., RM2

HARDESTY, E. W., MM2
HARRIMAN, R. L., TM2
HARVEY, N., SFP2
HICKS, J. D., EN2
HILLS, A. L., BM2
HODDER, J. A., ETN2
HUNTLEY, A. L., TM2
IZZO, M. R., BM2
JENKINS, D. C., PH2
KELLAR, A. T., MM2
KIMBLE, J. R., EN2
KOZLAK, M. S., OM2
KYSER, R. L., MM2
LANDRY, L. M., EM2
LEE, J. R., TM2
LEFFERSON, C. R., ML1
LIDGETT, R. I., IC2
LUTZ, R. E., MM2

LYNCH, C. R., DP2
MAHLER, R. E., MM2
MANCHESTER, G. B., IM2
MARKEM, J. D., MR2
MATTHEWS, R. W., HM2
McCLENDON, F. H., RM2
McCOY, M. R., SH2
McMILLIAN, E. W., TM2
MOON, J. R., BM2
NAYLOR, J. T., MM2
NOGA, M. A., BT2
NORDAN, R. H., DC2
ORLUK, J. J., ETN2
OUELLETTE, D. F., EM2

PARKER, K. G., RM2
PATTERSON, B., BT2
PATTERSON, E. J., LI2
PENNYBAKER, W. L., IC2
PETERSON, D. J., ETN2
PHILLIPS, R. D., EN2
PHILLIPS, W. F., FTG2
PREECE, V. L., EN2
PUSHMAN, K. A., PN2
QUNELL, D. L., SFM2
RADABAUGH, C. E., EN2
RADER, T. L., EM2
RAGAN, J. E., IM2
RATHMAN, R. L., ETR2

REED, H., SFM2
RISBON, P. G., MM2
ROBINSON, S. K., SK2
SACILOWSKI, J. H., ETR2
SCHAIRER, J. A., OM2
SHARPE, R. T., ETR2
SMITH, M. J., HM2
SMITH, W. L., IC2
SSTICKLEY, D. J., OM2
STOERMER, E. F., ETN2
SUTTON, H. S., FTG2
SWANSON, R. N., ETR2
TABOR, R. T., ETR2

TAYLOR, J. H., SFM2
THOMASON, E. D., MR2
THOMPSON, K. L., HM2
TUCK, B. C., EM2
UMPHRESS, G. D., SM2
VANOVERBERGHE, A., DP2
VAN VOORHIS, E. K., MM2
VAN ZANDER, A. J., STS2
VICEDO, E. L., SK2
WADDINGTON, G., MR2
WALKER, L. D., EN2
WILLETTE, J. C., CS2
WILLIS, C. F., TM2

THIRD CLASS PETTY OFFICERS

ABRAHAM, C. L., SD3
ALEXANDER, C. R., SK3
AMY, A., SK3
ANDERSON, J. C., FTG3
ANTHONY, C. S., MR3
ARMSTRONG, L., SFM3
BAILEY, J. R., MM3
BAKA, J. J., RM3
BAKER, W. A., SFM3
BARBUSH, K. F., MM3
BARNES, B. J., SH3
BARNIKOW, D. M., EN3
BARTON, M., HM3
BASHANT, S. R., EN3
BELCHER, B. K., YN3
BERRY, W. E., DC3
BOICE, S. E., ETR3
BOLLES, J. R., ETN3
BOOKER, R. K., MM3
BOWEN, H. F., HM3
BOYCE, G. L., BT3
BOYLES, K. P., BT3
BOZANT, P., EM3
BRAZIER, R. E., DC3

BROOKS, W. D., YN3
BROWN, R. G., DM3
BUGBEE, B. W., STS3
BUSH, T., MM3
CAMPBELL, M. E., FTG3
CASH, H. F., ETR3
CHIPPS, R. L., SFM3
COLBECK, E. L., EM3
COLEMAN, J. P., MM3
COOK, K. G., EN3
COOPER, A. C., FTG3
CORBLY, M. C., IC3
COREY, D. H., TM3
CROSS, R. A., EM3
DAY, D. L., SFM3
DESILVERY, D. P., MM3
DEWEY, R. D., SK3
DILKS, D. D., DP3
DURAND, D. L., MR3
EDDY, M. D., DC3
EGGERS, L. G., STG3
ELLERY, M. D., EM3
EMERY, W. P., EN3
ENLOW, D. A., EETN3

ERICKSON, L. T., SFM3
EVERETT, E. J., RM3
EWING, H. F., EM3
FANSLER, M. M., ETR3
FORREST, L. W., SK3
FORSTING, T. E., MM3
FOUGHT, G. A., SFM3
FOWLER, G. M., SK3
GALE, J. A., SK3
GARCIA, G. S., SD3
GIBBONS, R. C., GMG3
GIFFORD, J. P., EM3
GILMORE, J. S., CS3
GRAF, L. F., SFP3
GRUBBS, H. A., SH3
HAMMERLING, A. L., YN3
HASSERT, T. W., SK3
HERRON, D. N., SFM3
HOOGENBOOM, G. A., TM3
HOUGHTON, E. R., EH3
HOWARD, T. L., EM3
HUNSUCKER, M. D., SK3
IMMEL, L. E., MR3
ISOM, R. W., SH3

IVES, S. C., SFP3
JACKSON, E. T., TM3
JENKINS, T. L., PN3
JENNINGS, J. W., MM3
JESSIE, L. A., SK3
JOHNSON, J. D., QM3
JOHNSON, R. J., MM3
JOHNSON, W. C., MR3
JOHNSTON, H. E., EM3
JONES, R. J., BM3
KANIPE, M. R., HM3
KNAPP, J. C., MR3
KNIGHT, C. W., DC3
KNIGHT, L. M., CS3
KRAUSE, S. K., BM3
LACEWELL, L. K., SK3
LAFOND, D. R., EM3
LEDBETTER, R. W., SK3
LEFEVRE, L. K., SK3
LEHMAN, K. C., RM3
LEMASTER, E. W., SK3
LIGGON, C. W., DT3
LISKEY, R. A., TM3
LITTLE, G. F., ETR3

LIVERETT, W. I., BM3
LONEWELL, L. W., BT3
LUZETSKY, R., YN3
MAHOOTY, L. D., DC3
MANDERSON, G. J., SK3
MANION, S. F., EM3
MARTIN, R. L., STS3
MATHENY, P. W., TM3
McCANNON, R. M., TM3
MERRILL, P. J., SH3
MOLINE, S. F., SK3
MOORE, J. A., DP3
MOORE, L. K., MM3
MROZ, R. R., TM3
MUELLER, J. P., BT3
MULLHOLAND, R. F., MM3
MURPHY, W. H., EM3
MUSCATO, C., SH3
NELSON, K. D., SK3
NEWTON, J. P., QM3
O'LOUGHLIN, W. F., SK3
ORDAS, A. A., SD3
ORLICK, P. J., ETN3
OTEY, R. S., MM3
PANIS, A. C., SD3
PARADISE, J. A., PN3

PARRISH, R. C., GMG3
PARSELLS, D. R., BM3
PELLETIER, C. E., SFM3
PELZ, R. A., GMG3
PENICH, R. D., MR3
PERKIN, C. E., SFP3
POOLE, C. J., PM3
PUMIGLIA, Z. M., MM3
QUINN, J. J., PN3
RANKIN, T. L., SK3
RAY, M. D., BT3
REEB, J. R., EN3
REIS, M. J., TM3
RICE, G. E., CS3
RICHARD, A. L., TM3
RICHARDSON, W. M., MR3
RIEHLE, A. A., BT3
RIEKER, S. E., BM3
RIFFLE, R. N., ETN3
ROMO, L. O., SK3
ROMSOS, A. B., BT3
ROY, L. O., EN3
RUTHERFORD, T. C., ETR3
SADWICK, R. J., DTG3
SAGE, G. L., ML3

SALAVADORE, J. J., YN3
SALGUERO, M. M., ETR3
SANDSTROM, L. A., BM3
SCHAEFFER, P. B., SK3
SCHWARTZ, A. W., DP3
SHAVER, T. R., FTG3
SHIMP, W. J., SFM3
SLEEPER, C. J., MR3
SMITH, D. N., MM3
SMITH, G. E., ETN3
SMITH, T. R., EN3
SPENCE, W. C., ML3
SPERRY, R. C., SFP3
SQUIRES, C. E., MM3
STEINKE, T. W., MM3
STEPHENSON, D. G., PC3
STEPHENSON, R. B., BT3
STORTINI, L. P., BM3
STROHFUS, G. W., MM3
SWEENEY, T. F., LI3
TABARES, D. V., BT3
TEWKSBURY, M. K., IC3
THACKERY, D. R., SFP3
THOMAS, L. A., MR3
THOMPSON, M. R., SK3

THOMPSON, P. F., SH3
TROUT, J. G., SFM3
TSCHUOR, J. E., EM3
TURNER, D. R., HM3
TURNER, R. P., BM3
ULERY, A. R., SFP3
VALERIO, A. J., SH3
VARNADO, E. W., IC3
VILLARREAL, R., SK3
VOGT, M. J., EN3
WALKER, J. E., TM3
WALKER, C. J., STG3
WALTON, R. G., SK3
WATSON, G. L., SFM3
WEAVER, J. W., FTG3
WEBBER, L. L., EN3
WHITE, C. D., DK3
WHITE, J. E., EM3
WILLIAMS, G. E., SH3
WILSON, D. F., MR3
WILSON, G. K., EN3
WOODRUFF, R. W., FTG3
WOODS, J. E., MR3
WRIGHT, J. A., SK3
WURDEMANN, L. F., DT3

NON-RATED MEN

ABBOT, D. A., ETRSA
ADAMS, D. E., SN
ADAMS, P. L., FN
ADKINS, G. E., MRFN
AGUILAR, F. A., TN
AGUIMATANG, S., TN
ALEXANDER, T. H., SN
ALLMAN, L. W., FN
ANDRESKI, J. F., ICFN
ARCHULETA, A. J., SN
ARNOLD, J. Y., SN
ARREDONDO, J., SN

BAILEY, C., FN
BAKER, R. E., SN
BAKER, T. R., SN
BARD, R. M., RMSN
BARNES, R. C., FN
BARNETTE, D. C., FN
BARTOLOZO, F. A., TN
BASNETT, D. L., SFMFA
BASS, J. J., FN
BAUTISTIA, N. M., TN
BEARD, R. F., FN
BEEN, K. R., FN

BEERS, D. G., DPSN
BELL, J., SN
BEMB, W. E., FN
BENJAMIN, W. L., SN
BENOT, P. F., EMFA
BENSON, D. W., FN
BENTLE, N. L., SMSA
BENTON, J. W., SN
BERENDT, D. A., FA
BERGER, G. K., FN
BERGERON, A. A., SN
BETTS, B. L., FN

BEVERSDORF, J. G., SHSA
BILLINGS, P. F., SN
BISHER, G. J., FA
BLACKBURN, G. L., FN
BODACH, R. E., ENFA
BOECKER, J. A., FA
BOGERT, R. L., SN
BOLTE, J. A., HN
BOLTON, S. W., FA
BOMBOY, T. S., CSSA
BONNAURE, G. W., DPSN
BOURDON, H. N., FN

BOWEN, P. D., FN
BOWMAN, R. D., EMFN
BOWNS, E. W., CYNSSN
BRADY, J. W., SN
BRASURE, G. R., FN
BRETZIK, T. J., FA
BREWSTER, W. A., TMSN
BROCKWAY, C. W., MRFA
BROWN, R. W., ENFA
BROWN, W. E., EMFN
BROWN, W. L., SA
BUDD, W. H., FN
BURGER, J. R., CSSA
BURKE, R. J., MRFA
BURKETT, R. F., DCFA
BURRIER, G. W., SN
BURTWELL, B. H., FN
BUSH, T. J., SN
BYNE, C. J., CYNSSA
CAMANTIGUE, R., TN
CAMPBELL, W. H., SN
CANIZALES, J. R., FN
CAPPAR, T. W., FN
CARDARO, T. M., FN
CARPENTAR, J. R., ICFN
CARROLL, J. C., FN
CARTER, K., SN
CASTILLO, S. E., TN
CAUDILLO, R. A., FN
CAUTHEN, W. D., FN
CHILTON, W. L., FN
CHRISTIE, J. P., SN
CLARKE, A., FN
COFFEL, H. L., FN
COLE, J. H., FN
COLLINS, L. R., SN
COMSTOCK, J. B., SA
COOK, M. E., FN
COOK, S., FN
COOPER, G. L., CSSN
COOPER, P. M., TMSN
COTE, M. A., FN
COTE, P. D., HN
COX, M. W., FN
COX, M. E., SN

CREECH, B. B., FN
CRINO, F. A., SHSA
CRONAN, M. E., SN
CROTEAU, L. A., FN
CRUCE, S. D., SN
CUMMINGS, S. P., HN
CURRAN, S. P., FN
DAILEY, K. L., SN
DAVENPORT, D. R., SN
DAVIES, D. P., DCFN
DAVIS, D. R., FN
DAVIS, T. E., SA
DECHANDIA, A., FN
DEMAREE, J. A., SN
DEMORANVILLE, P. G., FN
DENNY, D. M., ICFN
DESJARDINS, J. E., SN
DETER, H. J., SFPFN
DICKENSON, E. D., SN
DIGIACOMO, A. M., SN
DILLINGHAM, D. R., EMFA
DOLSEN, J. H., FA
DORTCH, R. M., SN
DREMEL, F. M., FN
DUKE, K. A., SN
DUNCAN, J. N., FN
DUNN, S. D., SN
DURKO, A. P., MRFN
DYER, D. R., SN
EDWARDS, D. A., SN
ELDERT, R. E., SN
ELLIOTT, J. J., CSSA
ENGLAND, D. E., SN
ERDMAN, D. A., FN
EVANGELISTA, S. J., FA
FAIRFAX, T. W., SN
FERRELL, B. W., SN
FERRIER, D. G., IMSA
FIDDNER, J. R., SN
FISHER, D. A., BTFA
FITZGERALD, K. M., SKSN
FORD, R. E., SN
FORD, T. E., SA
FOSTER, H., SN
FRANK, H. I., EMFN

FREITAS, D. W., SN
FRIGILLANA, A. M., TN
FULLEN, E. J., ICFN
FULTON, S. B., FN
GAFFIELD, T. W., SN
GAINES, J. L., EMFN
GARNSEY, T. W., SN
GERVACIO, S. R., TN
GIBSON, J. J., MRFA
GILLIS, B. K., FN
GISONDI, F. A., IMSA
GLENN, D. E., CSSN
GOBOLEZA, D. A., TN
GORDON, D. G., FN
GRASSLIN, R. M., TMSA
GREEN, B. S., FN
GREEN, E., SFMFA
GRILLO, A. W., FN
GRIMM, G. A., FN
GUSSLER, D. E., FN
GUTHRIE, G. M., FN
HACHFELD, S. W., FN
HALL, R. M., SN
HAMBLETON, W. B., ICFN
HART, G., FN
HARTER, J. R., SN
HARTMAN, R. A., FN
HAWES, C. L., SN
HELMIG, A. J., FN
HENDRICKS, W. L., SN
HERDMAN, R. D., ICFN
HEYEN, E. J., BTFN
HIGGINBOTHAM, G. G., FN
HINDS, F. F., SN
HINES, P. W., FN
HINSON, L. J., SN
HOFFMAN, B. A., EMFA
HOHENSEE, T. L., ETRSN
HOUSTON, D. J., MRFA
HOWLAND, J. R., SN
HUGHES, P. M., TMSN
HUIE, F., SN
HUME, D. H., OMSA
HUMPHRIES, S. R., FN
HUSTON, T. A., FN

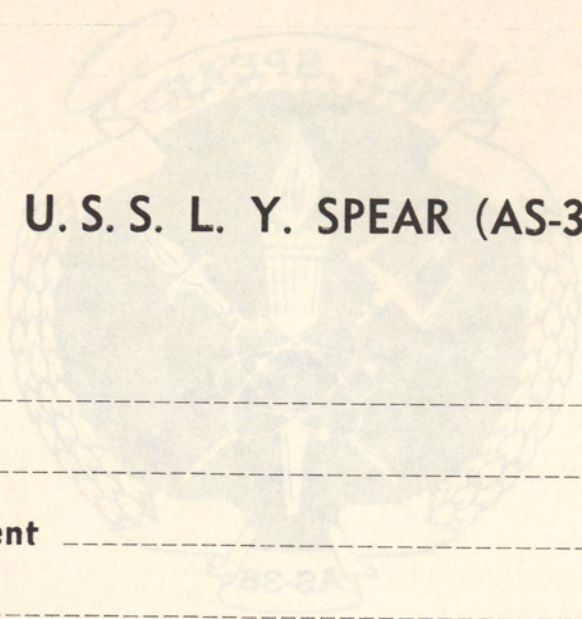
JACKSON, B. G., FN
JACKSON, M. D., SN
JOHNSON, C., SN
JOHNSON, D. K., TMSA
JOHNSON, J., FN
JOHNSON, J. H., SA
JOHNSON, K. O., CSSA
JOHNSON, P., SA
JONES, F. D., SN
JONES, L. E., SN
JOSE, M. R., TN
KAUFMAN, D. J., EMFA
KEASEY, R., MMFA
KENDELL, C. D., FN
KERNS, W. H., SN
KERR, R. W., FN
KING, M. A., DCFA
KIRBY, J. L., FA
KIRKLAND, S. C., SN
KITTS, R. G., SN
KLONARIS, A., FN
KNEERAM, D. D., CYNSSN
KNUTSON, J. L., EMFA
KOHORST, M. F., TMSA
KOSTMAN, P. D., MRFN
KRAJEWSKI, D. L., MMFN
KUESTER, R. D., TMSA
LAIR, J. W., FN
LAND, K. W., SN
LANE, W. R., SN
LANKFORD, D. D., SN
LAPLACA, G. C., FN
LAWRENCE, M. D., SN
LAWRENCE, M. E., SFMFN
LEE, P. D., SN
LEPON, W. J., SN
LEVAN, D. G., SN
LISKA, D. P., BTFA
LOGSDON, L. W., TMSN
LONG, W., SA
LOVIN, G. M., SN
LUMPKIN, H., SN
LUND, B. E., SN
MAAHS, M. T., FN
MADDOX, G. L., SA

MANNIE, A. J., DCFA
MANSON, A., FN
MASTERSON, L., SN
MAURER, K. W., SN
McCOOK, C. J., SHSN
McCUTCHEON, K. P., SKSN
McDOWELL, D. R., SN
McGINN, J. J., SN
McKENZIE, G., FN
McLEOD, D. L., FN
MEREDITH, D. W., FTSA
MESERVEY, R. E., FN
MEYER, T. M., SFMFN
MICAL, J., SFMFA
MILLER, R. L., SN
MILLER, J. A., FA
MINTER, J., SN
MONAGHAN, R. J., EMFN
MONTGOMERY, L. W., SN
MOSLEY, R. W., SFMFN
MOSS, J. R., SN
NEAL, G. L., SN
NEAL, H. C., FN
NELSON, D. D., DKSN
NICHOLS, J., FN
NOLAN, J. F., FN
NORTON, J. A., FA
ORF, T. S., DPSN
OSMON, M. L., SN
OVERKAMP, G. M., SN
OWENS, J. P., FN
PACKER, J. R., EMFA
PERRYMAN, J. C., FN
PERSON, A. H., SN
PHILLIPS, L. L., FN
PHILSON, G. W., FN

PIVER, H. V., SFPFA
PLUMMER, R. J., SN
PLUNKETT, J. D., DKSN
POE, R., ETRSN
POLLMAN, H. B., DN
POWELL, W. M., ICFN
PRESSER, R. H., RMSN
PREVOST, C. F., MMFN
QUINONES, M. G., TN
RADDATZ, M. L., MRFA
RADEBOLDT, P. F., SKSA
RAESS, M. E., CSSN
RAY, W. A., FN
REED, R. L., SN
RIDGWAY, W. E., IMSN
ROBINSON, A. M., SN
ROBINSON, F., SN
ROGERS, C. G., MMFN
ROOGENBUCK, R. A., FA
ROSS, D. B., SN
ROY, R. C., ICFN
RUDD, S. V., FN
RULLO, R. J., ICFA
RUSSELL, C. L., FN
RUTZ, R. H., OMSA
SADLER, G. N., FN
SAINS, B. L., FN
SALTOU, D. R., ICFN
SANCHEZ, J. G., FA
SANCHEZ, V., FN
SANDER, R. D., CYNFA
SANDERS, J. A., SFMFA
SANDERSON, J. F., FN
SARANGYA, F., TN
SARNER, D. B., EMFA
SARTEN, C. E., SN

SAVER, J. P., FN
SCHLUP, L. D., FN
SCHMIDT, D. C., SN
SCHOONOVER, G. R., FN
SCHWEICH, T. J., TMSN
SHELTON, J. E., FN
SHOAF, D. K., ICFN
SHROUPSKY, W. F., SN
SIEGREST, D. P., PNSN
SINGLETARY, G., SN
SNOW, D. H., SA
SOUTHERN, J. L., SN
SPAHN, D. D., SN
SPANGLER, R. E., SKSN
SPEARMAN, K. E., TMSN
STANLEY, C. L., SFPFN
STAUDENMAYER, T., SN
STERRY, J. R., ICFA
STEWART, M. H., BTFA
STIMPSON, G. M., RMSA
STOCK, R. A., SKSN
STONE, J. S., FN
STURCH, R. D., FN
SWEENEY, R. L., FN
SWIERKOWSKI, A., FN
SZAKALASKI, J. A., SMFN
TAYLOR, C. R., SN
TAYLOR, J. D., SHSN
THALL, E. C., MRFN
TINDLE, E. R., EFMFN
TIPPIN, J. M., FN
TOMASHESKI, W., TMSN
TRIMEW, J. M., FA
TRIPLETT, J. W., ICFN
TURNAGE, W. F., TMSN

TURNER, R. W., SN
TYLER, C. R., TMSN
ULMER, R. S., FN
URBAN, M. O., RMSA
VALLERIE, H. E., SFMFA
VANDERHOEVEN, F., MRFA
VINCENTI, R. F., SN
WAGNER, D. J., SFPFA
WALLEN, D. D., DPSN
WALLWORK, C. D., FN
WARD, L. D., FA
WARD, W. I., FN
WARNER, D. T., DCFN
WATKINS, A. J., FN
WATTS, C., FA
WEILER, D. J., FN
WENTWORTH, B. E., OMSN
WENTWORTH, B. E., OMSN
WEST, A. E., FN
WEST, C. J., SN
WHITE, B. T., MRFA
WHITE, P. C., OMSA
WHITE, R., FN
WHITE, T. M., SN
WHITMAN, P. H., SN
WILER, J. L., SFPFA
WILKINSON, T. L., RMSN
WILSON, J. P., SN
WILSON, S. A., FA
WITKOWSKI, E., EFMFA
YACONE, J. M., TMSN
ZENNER, S. G., TMSA
ZIARNOWSKI, R., SN
ZDANOWICZ, R. J., FN
ZUNGOLO, C. G., MMFN



U. S. S. L. Y. SPEAR (AS-36)

Length ----- 640 feet
Beam ----- 85 feet
Displacement ----- 22,600 tons
Draft ----- 24.5 feet
Type of propulsion ----- Steam turbine
Propulsion shafts ----- One
Speed ----- 18.5 knots
Armament ----- Two single 5"/38 gun mounts
Four 50 cal. machine guns



INSIGNIA OF U. S. S. L. Y. SPEAR (AS-36)

The ship's crest of U. S. S. L. Y. SPEAR (AS-36) was based on designs originated by Shipfitter First Class Thomas G. Long, U. S. Navy and Torpedoman Second Class John R. Lee, U. S. Navy. Working from there, a committee composed of Chief Patternmaker George J. Rhoads, Molder First Class Barry N. Paul, Photographers Mate Second Class Donald C. Jenkins, Machinists Mate First Class Manuel D. Buck, Interior Communications Electricians Mate Second Class Raymond I. Lidgett, Electronics Technicians Third Class Gregory E. Smith and Petty Officers Long and Lee developed the crest, which symbolizes the ship's mission of sea power (trident) for peace (oak leaves) and liberty (torch).

Autographs

THE NAVY HYMN

ETERNAL FATHER! STRENGTH TO SAVE

Eternal Father, strong to save,
Whose arm hath borne the restless wave,

*"It takes the Navy three hundred to rebuild a battleship. It would
take three hundred to rebuild a nation."*

○ Christ! Whose voice the waters heard

And said, "Be still, and let me pass."
Who walked on the tossing deep,

And calm amid the rage didst sleep;

○ Hear us when we cry to Thee

For those in peril on the sea!

Most Holy Spirit! Who didst brood

Up on the chaos dark and rude,

And bid its angry tumult cease;

And give, for wild confusion, peace;

○ Hear us when we cry to Thee

For those in peril on the sea!

Cunningham, R. N.



THE NAVY HYMN

ETERNAL FATHER! STRONG TO SAVE

Eternal Father, strong to save,
Whose arm hath bound the restless wave,
Who bidd'st the mighty ocean deep
Its own appointed limits keep;
O hear us when we cry to Thee
For those in peril on the sea!

O Christ! Whose voice the waters heard
And hushed their raging at Thy word,
Who walked'st on the foaming deep,
And calm amidst its rage didst sleep;
O hear us when we cry to Thee
For those in peril on the sea!

Most Holy Spirit! Who didst brood
Up on the chaos dark and rude,
And bid its angry tumult cease,
And give, for wild confusion, peace;
O hear us when we cry to Thee
For those in peril on the sea!

“It takes the Navy three years to build a ship. It would take three hundred to rebuild a tradition.”

— Admiral Sir Andrew Cunningham, R. N.

